

REFRIGERATED

Trailers

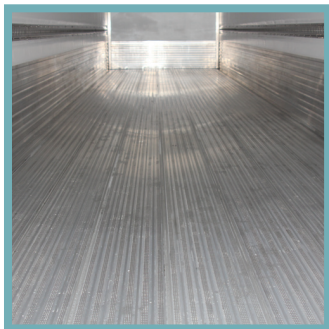
Length:	Ext. 15 450mm	Int. 15 219mm
Width:	Ext. 2 600mm	Int. 2 445mm
Height:	Ext. 4 300mm	Int. 2 638mm
Door Opening:	Width: 2 498mm	Height: 2 629mm

REEFER BODY CONSTRUCTION

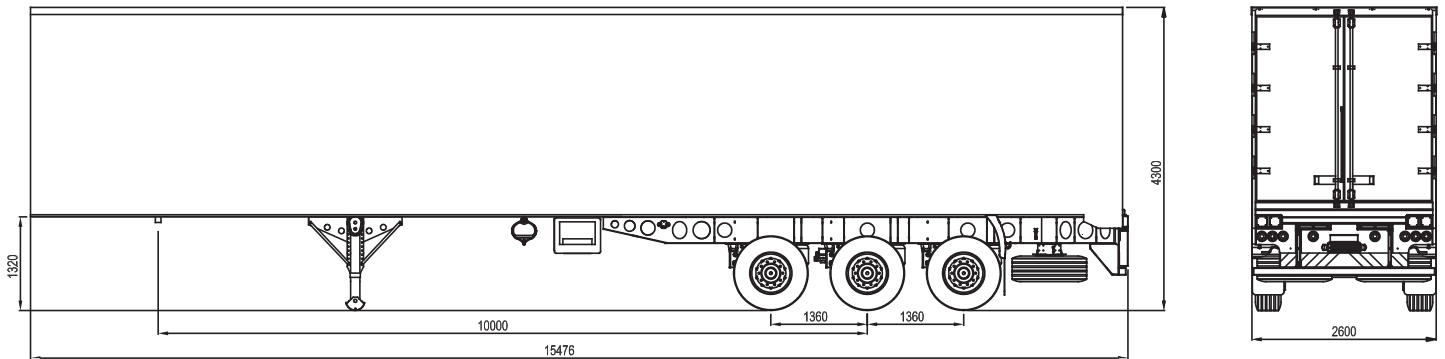
Side Sheets:	1mm Pre-painted white aluminium side sheets. Two recessed, stainless steel cargo rails on each side (850mm and 1800mm from floor) are fitted as standard features. Four heavy duty, galvanized shoring poles are supplied as standard.
Side Posts:	28mm High extruded aluminium J-uprights with serrated surface on 300mm centres from nose through to landing gear, and 600mm centres from landing gear to rear.
Top Rails:	Unique top rail consists of two piece heavy-duty extruded aluminium rails for a stronger structure and for ease of maintenance.
Roof:	One-piece, 1mm thick, pre-painted white aluminium sheet. Embedded roof bows eliminate any heat-bridge effect for better insulation. Extra carrier beams for rear evaporators are installed as standard features.
Roof Bows:	28mm High extruded aluminium J-beams with serrated surface on 800mm centres pre-riveted to form an integral frame for greater stiffness and to prevent delamination.
Nose:	1mm Pre-painted white aluminium front sheet. Steel uprights inside ensure a super-strong structure. Hot-dipped galvanized unit frame. 125mm Radius heavy duty extruded aluminium nose corner with high-gloss stainless steel cover sheet.
Rear Frame:	Super strong (6mm box sections) stainless steel rear frame with specially moulded polyurethane impact rubbers for enhanced protection.
Rear Doors:	1mm Pre-painted white aluminium outer sheets. Rivetless door panel design, bonded sandwich foaming and multiple seals provide excellent insulation. One Furgocar stainless steel lock rod and four heavy-duty Furgocar stainless steel hinges per door are standard features. Rivet nuts and lock-bolts for anti-theft and strength. A stainless steel grab handle is installed on the right hand door for easy access. Option: 0.7mm Patterned stainless steel clad rear doors.



Floor:	35mm Heavy-duty, grocery type aluminium flat floor with special knurling surface for anti-slip in all directions. All stringers are made out of a high strength composite for maximum durability. Option: 25mm DUCT floor for better ventilation if goods are not palletized.
Scuff bands:	600mm High, heavy-duty extruded aluminium scuff bands all around, fully welded to the extruded floor. All fasteners to the side walls are hidden to prevent water ingress and accidental hooking to pallets or forklifts when loading or unloading.
Linings:	Sides: 1.5mm Versitex (VR2) Rear doors: 1.5mm Versitex (VR2) Front: 1.5mm Versitex (VR2) Ceiling: 1.5mm Versitex (VR2)
Foaming:	Computer controlled high pressure polyurethane injection system, fills consistently without any cavities.
Insulation:	70mm Thick sidewalls, 100mm thick nose, 100mm thick roof, 76mm thick rear doors and 76mm thick floor.
Refrigeration:	Super-strong nose structure with hot-dip galvanized frame to mount the refrigeration unit on. A Duromax bulkhead for optimal airflow and protection is fitted as a standard feature.



ENGINEERING & SERVICE EXCELLENCE



UNDERFRAME & CHASSIS

- Upper Coupler:** 100mm Deep, full-width upper coupler with a rolled lip is fabricated with high tensile steel, including 8mm thick approach plate, grid plate and main channels. A standard 50mm Jost bolt-on king pin is fitted.
- Cross Members:** 100mm Deep, high tensile, hot-dipped galvanized I-beams are used for the substructure, with spacing varying between 200mm and 300mm.
- Chassis:** The chassis is manufactured out of high tensile steel, and is fully hot-dipped galvanized. The purpose designed chassis is bolted directly unto the floor sub-structure, covering a large area assuring smooth transmission of dynamic and static loads.
- Landing Legs:** SAF-Holland with 250mm square cushion footpads. Hot-dipped galvanized K-bracing and skirt plate with bulges for extra rigidity and strength.
- Rear Bumper:** Hot-dipped galvanized bumper brackets with a bolt-on, extruded aluminium rear under-run protection bumper.
- Assembly:** Separate bolt-on tailboard with taillights, chevron board and numberplate lights. Tailboard and rear under-run bumper assembly is mounted 100mm forward to prevent damage when docking. Four additional polyurethane bumpers are fitted as standard to the rear bumper brackets for extra protection.

RUNNING GEAR

- Suspension:** BPW air suspension 400mm ride height, 1400mm spring centre and 300mm air bags.
- Axles:** BPW HSALM EcoPlus 9t 120mm square beam axles, 2140mm track width. Bolt-on hangers for ease of maintenance.
- Brake:** Drum brakes 420 x 180mm with automatic slack adjusters. Option: Disc brakes 430mm.
- Rims & Tyres:** Fully reversible, aluminium rims (11.75 x 22.5) and tyres (385/65 R22.5) are fitted as standard features on super single axles.
- Hubodometer:** Option: Axles with dual wheels and tyres. An electronic hubodometer can be fitted on the centre axle if required.

BRAKE SYSTEM

- EBS System:** WABCO 4S/2M EBS E brake system to ECE R13.
- Air tanks:** Mild steel air tanks with manual drain valves.
- Couplings:** F&J quick couplers are fitted to the centre of the bulkhead. Equipped with a 7 pin ISO7638 type female plug and Suzi cabling for coupling.

ELECTRICAL SYSTEM

- Wiring Harness:** Sealed harness and connectors.
- Coupling:** Equipped with 15 pin ISO 12056 type female plug with coiled electrical cable.
- External Lights:** LED type lights. Three stop-, tail- and turn combination lights on each side are fully recessed in tailboard. Two reverse lights and two numberplate lights are fitted as standard. Four red high level lights in the rear frame, and two white high level lights in the front are fitted as standard. Option: High and low level amber side marker lights can be fitted.
- Internal Lights:** Four white internal lights, with an external on/off switch with on indication, are fitted as standard features.

COATING & FINISHING

- Steel Structures:** High tensile steel cross members and chassis structure are fully hot-dipped galvanized for best possible corrosion protection and low maintenance costs.
- Rear Door:** All aluminium outer sheets are pre-painted white. The rear doors can be specified in a 0.7mm patterned stainless steel finish.
- Decals & Artwork:** Customer-specific artwork and decals can be supplied and applied.

WARRANTY

- Warranty:** Twelve month warranty period subject to the standard conditions of sale and repair.



GRW Engineering (Pty) Ltd.

20 Abattoir Road
Worcester, 6850
P.O. Box 5102
Worcester, 6849

Tel: +27 (0)23 348 6300
Fax: +27 (0)23 348 6348
Fax: +27 (0)23 347 3895

email: grw@grw.co.za
web site: www.grw.co.za